

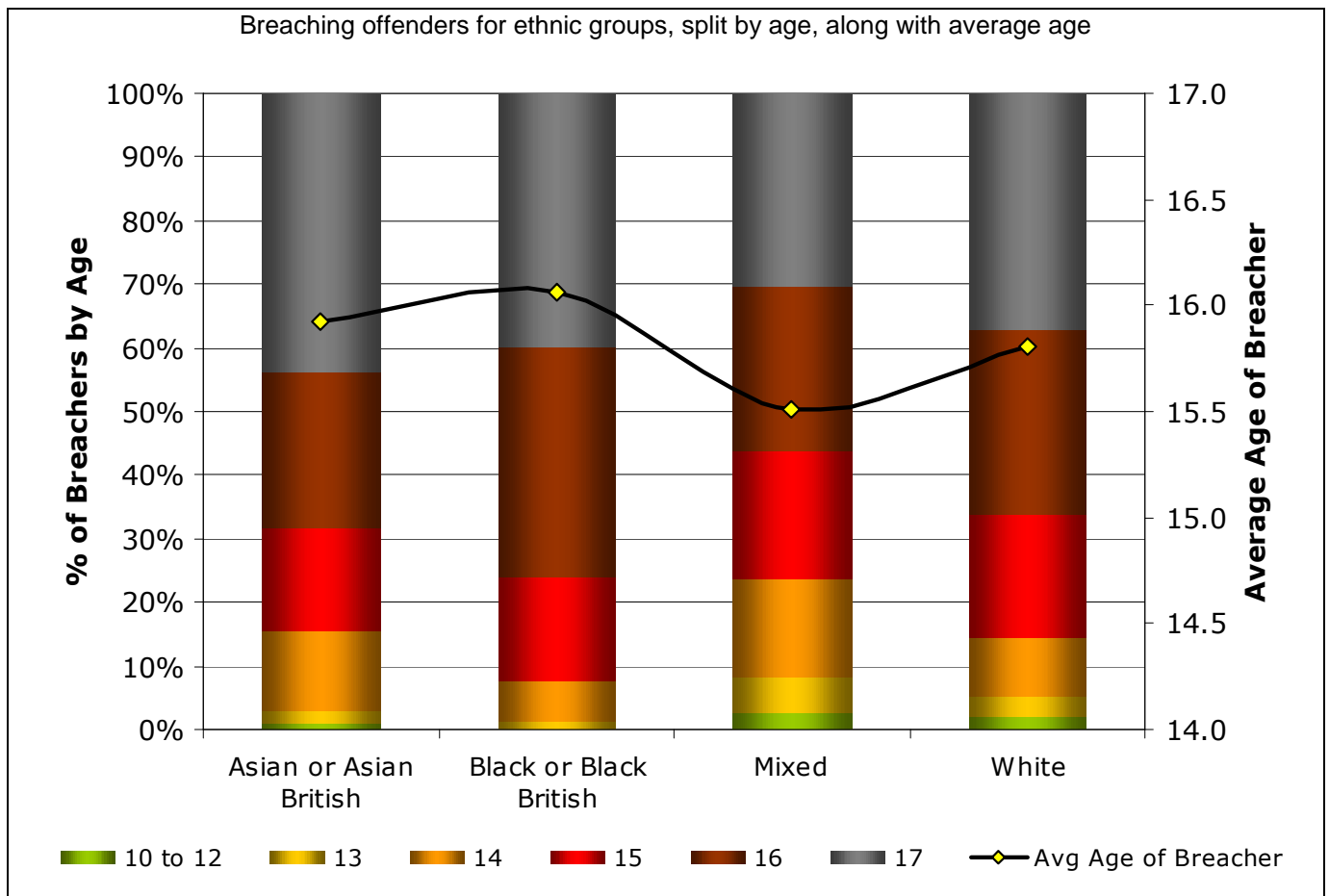
Challenge

We must focus our efforts and resources to improve the level of engagement with young people. We know that if we don't engage then young offenders have an increased likelihood to breach and then go into custody. Our figures show that approximately 20% of young people in custody are there for breaching a community sentence. The pathway of breach and custody has high associated costs and comparatively poor outcomes, specifically showing high re-offending rates. So what can we do to understand and reduce breach rates?

What did we do

Working in partnership with CACI we undertook a customer project to analyse 10 years worth of YOT data covering all our offences, interventions, assessments and prevention activities over that time. This was matched to data from our council's Data Observatory including local housing, economy, health and education outcomes as well as CACI's data repository on demographics, income and lifestyles.

We undertook an exhaustive analysis of the patterns of breach offenders including the following example charts. Looking at breach against the offender's age and ethnicity highlights that although the average age of breaching offenders has varied relatively little over the past decade, the average age by ethnicity shows a problem with younger mixed race offenders, who have the lowest average age of breaching offenders.



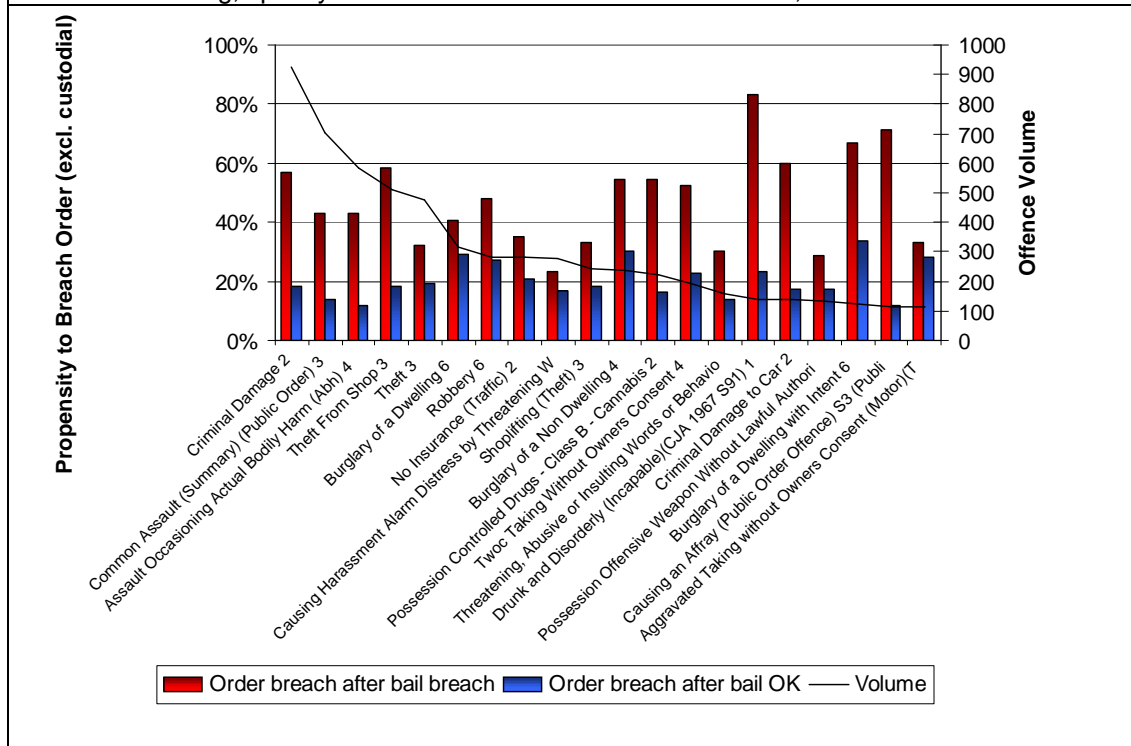
The relationship between breaching bail and breaching a community order was studied. It was seen that for cases with no breaches of bail, 84% of their interventions are not breached whereas those with a single breach of bail, have a 50% likelihood of breaching intervention, rising to over 90% for those with five or more bail breaches. The following chart illustrates that for every common offence, those that breach bail are more likely to breach their orders.

For further info contact:

Understanding and Reducing Breach

Bradford YOT Customer Insight Project With CACI – Sept 2011

Rate of breaching, split by whether or not bail had been breached, for most common offences



Learning Points

The analysis highlights that breaching behaviour is a roller coaster whereby once a pattern of breaching starts it increases and gathers pace for that offender. Breaching bail conditions significantly increases the likelihood of breaching statutory orders.

However, the gravity of offence isn't especially relevant. Overall the average age of breach is 15-16yrs and this has been constant over the decade, although mixed race young people breach at an earlier age. In terms of ethnicity, in Bradford the trend for breach by Black and Black British has decreased whereas Mixed Race and Asian are on the rise.

Interventions with highest breach rates: Failure to Surrender to Bail (35%), Supervision Order (11%) and Curfew Order (10%)

Changes

Based upon the findings from the customer insight, Bradford YOT has now:

- Developed a new Engagement / Reduce Breach Action Plan
- Implemented Compliance Panels
- Alerted staff to the risks associated with breaching bail and elevated it's importance in their work
- Implementing a scheme of monitoring and sharing best practise in response to the variation in staff practise for breaching young people

The YOT is also reviewing the range of interventions to quality assure their effectiveness and eliminate those which are underperforming in terms of how they engage with the young person

Understanding Local Variation

The customer insight analysis highlighted how breaching would have marked local variations, arising from the different ethnic composition in local area, the accessibility issues for young people in terms of public transport as well as the variation in sentencing practise by local courts

For further info contact:

Paul O'Hara, Bradford YOT Manager,
paul.ohara@bradford.gov.uk